

High Fidelity Wraparound

Made possible in partnership
with the County of Lehigh
through HealthChoices
Reinvestment funds



402 North Fulton Street
Allentown, PA 18102

High Fidelity Team:

David Hoke - Director of Behavioral
Health Services

Sharon Arangio - Director of HFW

Daniel Pratt - Coach

Marilyn Santos - Youth Support Partner

Robin Bennett - Family Support Partner

Magaly Soto - Family Support Partner
(bi-lingual)

Kathleen Kennedy - Family Support Partner

Stephen Miller - Facilitator

Blanca Sandoval - Facilitator (bi-lingual)

Shelley Fairclough-Gumbs - Facilitator

Inga Williams - Facilitator

Matthew Welser - Facilitator

Sean McDonnell - Facilitator

To make a referral or to learn more call
Sharon or Dan at 610-432-3919.

Referral Process

Referrals can be accepted from:

- ◆ Parents
- ◆ Young Adults
- ◆ Lehigh County Department of Human Services
- ◆ Lehigh County Office of Juvenile Probation Department
- ◆ Magellan Behavioral Health Services
- ◆ School Personnel
- ◆ Other Human Service Organizations

Introducing...
Pinebrook Family Services

High Fidelity Wraparound



Our mission at Pinebrook is to promote the well-being and self-sufficiency of the children, young adults, and families in our communities by providing the highest quality prevention, treatment, and advocacy services.



402 North Fulton Street Allentown, PA 18102

Tel. 610-432-3919/Fax: 610-740-9550

www.pinebrookservices.org



What is High Fidelity Wraparound?

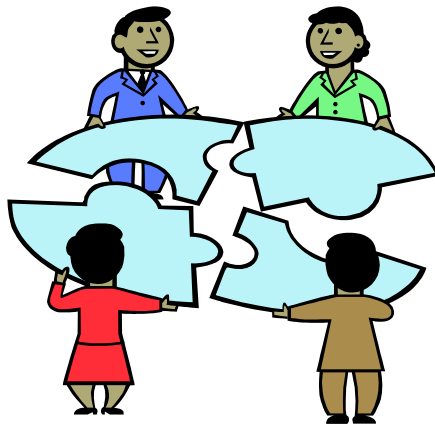
- ⇒ An evidence-based practice driven by the National Wraparound Initiative (NWI)
- ⇒ Team-based, collaborative process for helping children and youth with special mental health needs and their families identify and use their strengths and community resources
- ⇒ Develop and implement individualized Plans of Care to reduce the use of other restrictive mental health services
- ⇒ Evidence-based model has been utilized internationally and adopted widely throughout the U.S.

Eligibility Criteria for Referred Youth

- ⇒ Must be a resident of Lehigh County
 - ⇒ Must be between ages of 14 & 21 years
 - ⇒ Must have mental health diagnosis of serious emotional disturbance
 - ⇒ Must have experienced imminent, current, or previous placement(s) in a restrictive, intensive or intrusive level of mental health care
-

Phases of High Fidelity Wraparound (HFW)

1. Engagement and Team Preparation — Lay groundwork for trust and shared vision, set tone for teamwork consistent with the principles
2. Initial Plan Development — Develop team cohesion and shared responsibility toward achievement of overarching goals of the individualized plan



3. Implementation — Implement the Plan of Care, progress/success continually reviewed; changes made as indicated. Repeat process until goals achieved and HFW no longer needed
4. Transition — Purposeful transition from HFW to appropriate formal/natural supports in the community and the adult system, if applicable

“Transform the Children’s Behavioral Health System to a System that is Family Driven and Youth Guided.” ~

Office of Mental Health & Substance Abuse Services

10 Guiding Principles of High Fidelity Wraparound

- ◆ Family Voice and Choice
 - ◆ Culturally Competent
 - ◆ Individualized
 - ◆ Strengths Based
 - ◆ Community Based
 - ◆ Team Based
 - ◆ Natural Supports
 - ◆ Collaboration
 - ◆ Persistence
 - ◆ Outcomes Based
-